

The background of the slide is a photograph of a skier in a yellow and black jacket descending a snowy slope. The skier is positioned on the left side of the frame, leaving a trail of snow behind them. The rest of the image is a vast, white, snow-covered mountain landscape.

Benchmarking Survey Summary

2008 ITSC – Park City, UT

Safety: Make Your Mark!



Benchmarking Survey Summary

2008 ITSC – Park City, UT

- 12 Companies participating in 2007
- Occupational Injury/Illness experience
 - MSD data for Ergonomic Alliance

<u>Year</u>	<u># Employees</u>	<u># of CTDs</u>	<u>CTD Incident Rate</u>
2007	785,388	1372	0.17
2006	605,177	1589	0.26
2005	538,516	1483	0.25
2004	547,037	3055	0.56
2003	546,259	4073	0.75
2002	578,577	4849	0.84

- Motor Vehicle Incident experience
- OSHA Contact and Citation experience
- Professional staffing levels and organization description



Benchmarking Survey Summary

2008 ITSC – Park City, UT

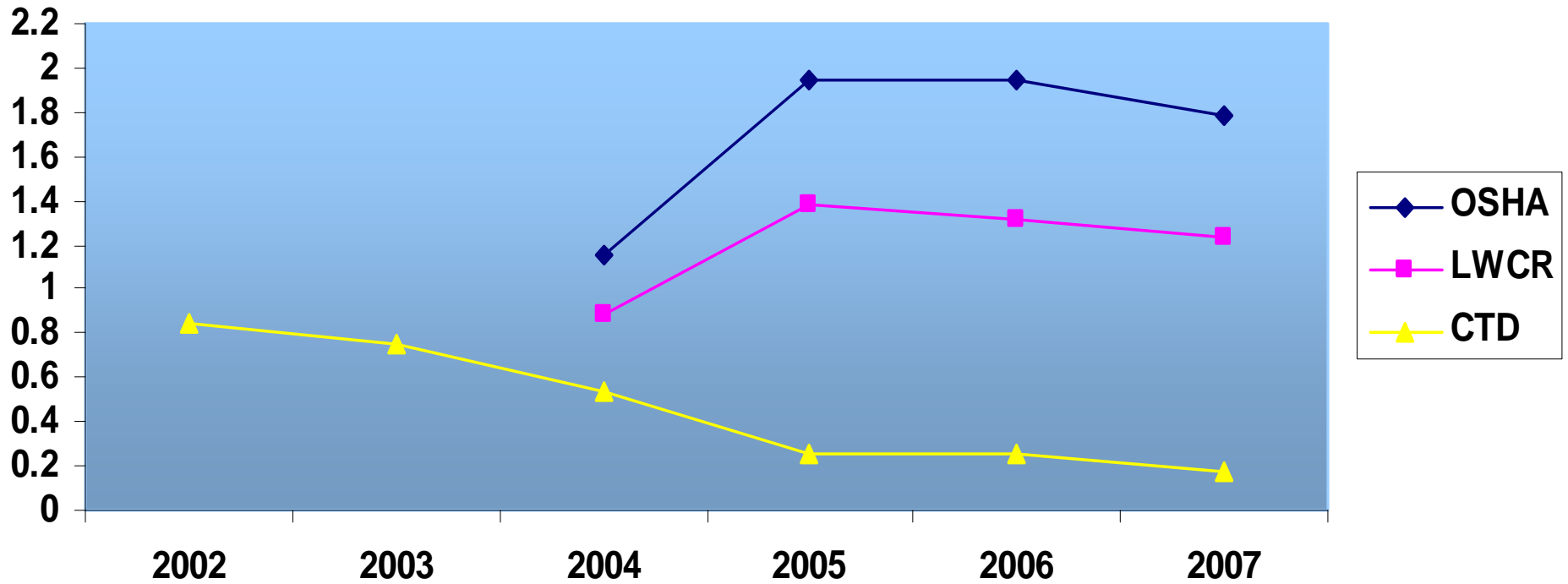
- ↑ 785,388 Total Employees
- ↓ 2.3 per 10,000 employees (Safety)
 - 178 Safety/IH/Ergo Professionals
- ↓ 1.5 per 10,000 employees (Environmental)
 - 121 Environmental Professionals
- ↓ 4 Contractors
- ↑ 20 DOT Professionals
- ↑ 3.87 Total Staff per 10,000 employees
- ↓ 70 OSHA Complaints
- ↓ 18 OSHA Citations

Benchmarking Survey

Summary

2008 ITSC – Park City, UT

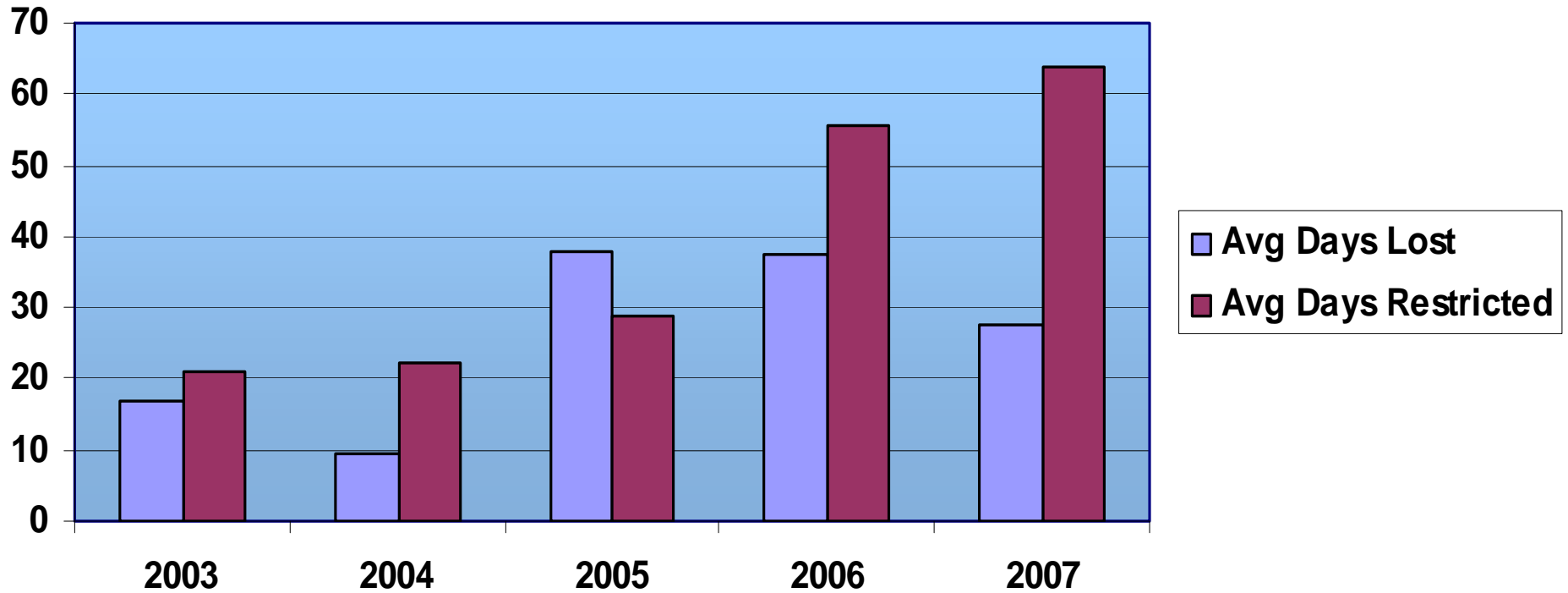
Frequency



Benchmarking Survey Summary

2008 ITSC – Park City, UT

Severity

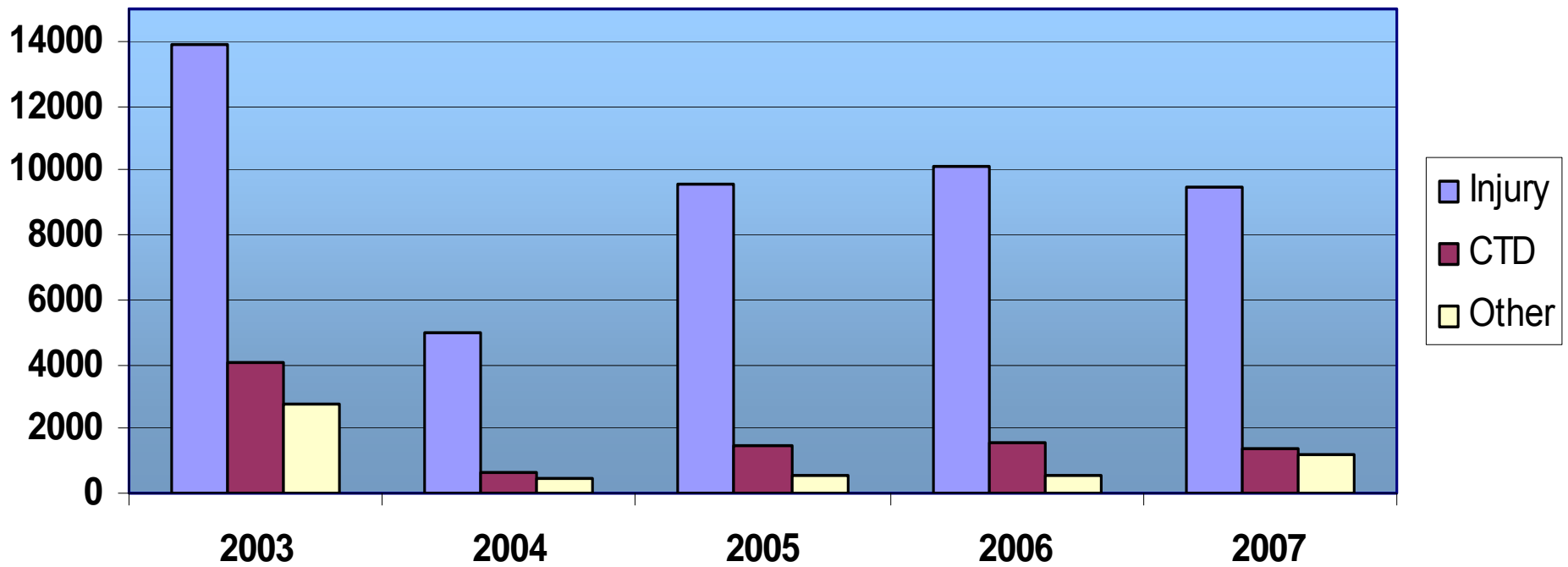


Benchmarking Survey

Summary

2008 ITSC – Park City, UT

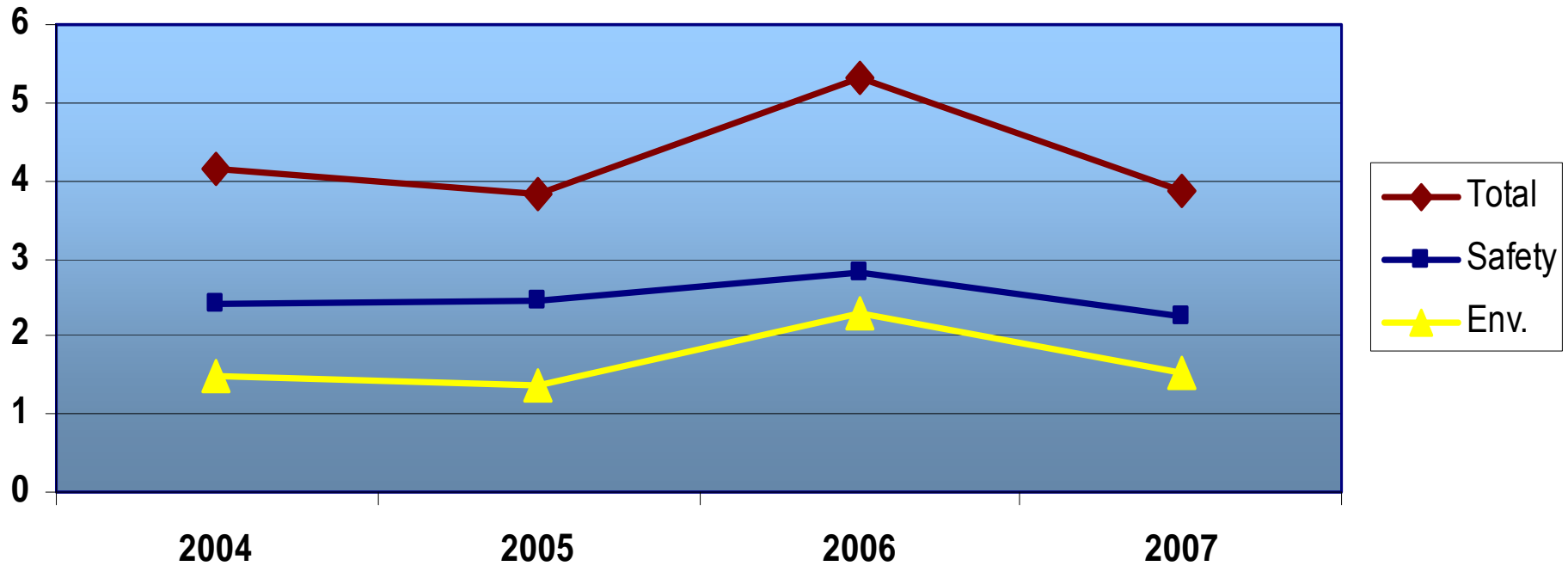
Type of Incident



Benchmarking Survey Summary

2008 ITSC – Park City, UT

EH&S Staff / 10,000 Employees





Benchmarking Survey Summary

2008 ITSC – Park City, UT

- Slip/Trip/Falls
- Cumulative Trauma
- Vehicle Accidents
- Lift/Carry/Push/Pull/Sprain/Strains
- Rear End Incidents
- Backing/Stationary Object Incidents
- Intersection Incidents

THANKS FOR PARTICIPATING!