

Benchmarking Survey Summary



International Telecommunications
Safety Conference | Denver, CO

Benchmarking Survey Summary



- 9 Companies participating in 2009
- Occupational Injury/Illness experience
 - MSD data for Ergonomic Alliance

<u>Year</u>	<u># Employees</u>	<u># of CTDs</u>	<u>CTD Incident Rate</u>
2009	445,575	1144	0.26
2008	443,663	842	0.19
2007	785,388	1372	0.17
2006	605,177	1589	0.26
2005	582,923	1483	0.25
2004	544,395	2961	0.54
2003	542,717	4057	0.75
2002	578,577	4849	0.84

- Motor Vehicle Incident experience
- Professional staffing levels and organization description



Benchmarking Survey

Summary

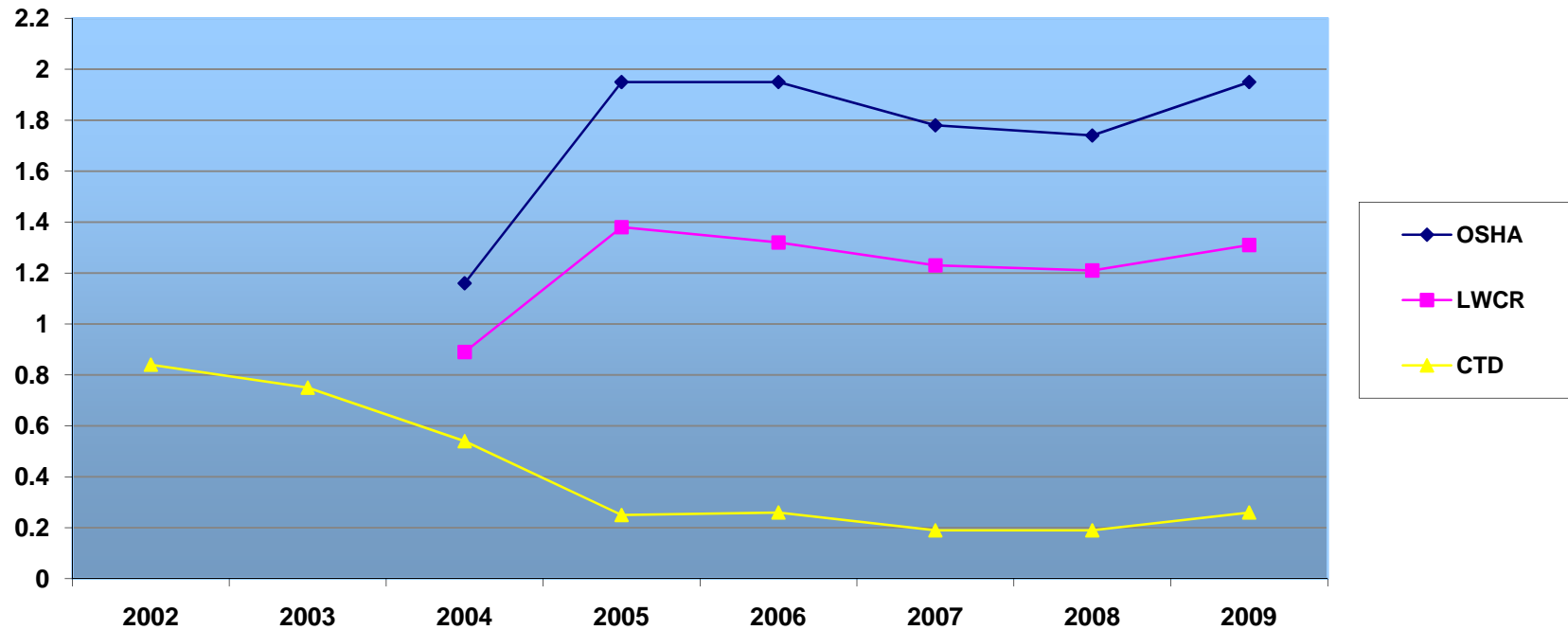
2010 ITSC – Denver, CO

- ↓ 657,384 Total Employees
- ↑ 2.16 per 10,000 employees (Safety)
 - 142 Safety/IH/Ergo Professionals
- ↓ 1.72 per 10,000 employees (Environmental)
 - 113 Environmental Professionals
- ↑ 3 Contractors
- ↓ 9 DOT Professionals
- ↑ 4.28 Total Staff per 10,000 employees

Benchmarking Survey Summary

2010 ITSC – Denver, CO

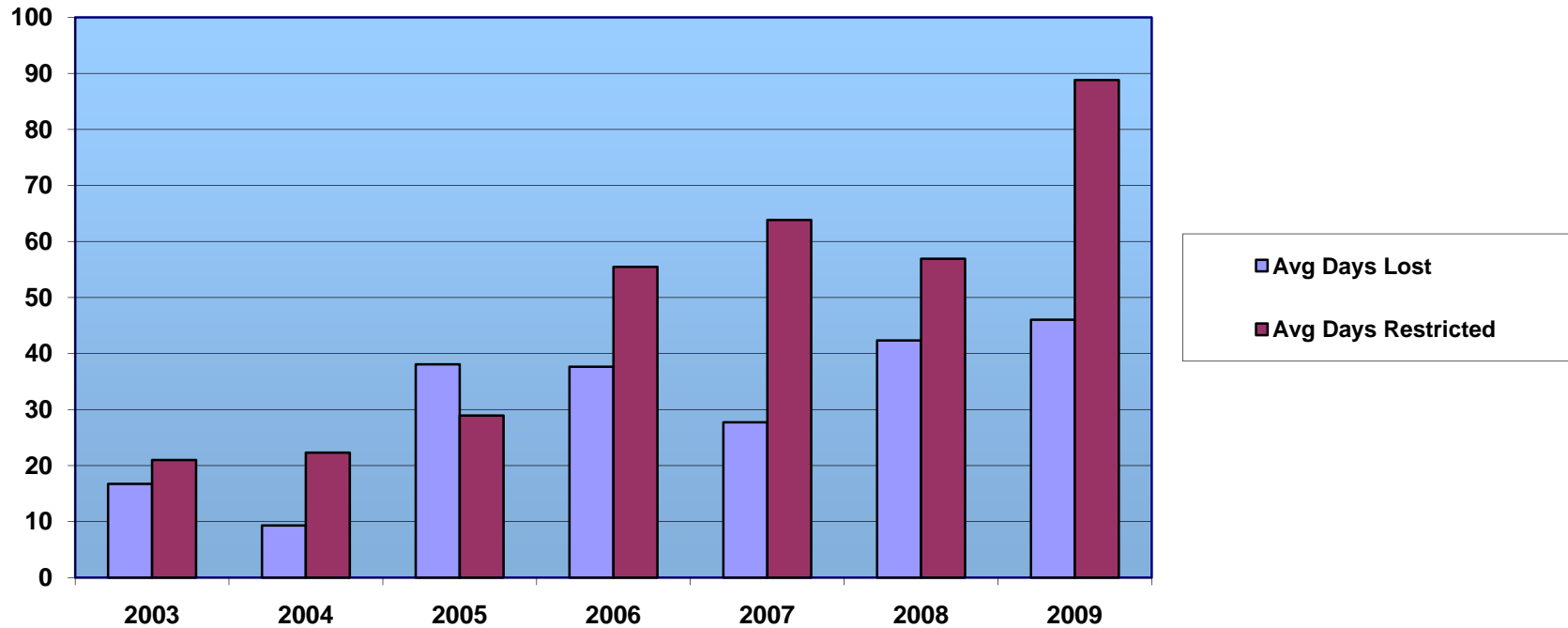
Accident Frequency



Benchmarking Survey Summary

2010 ITSC – Denver, CO

Accident Severity

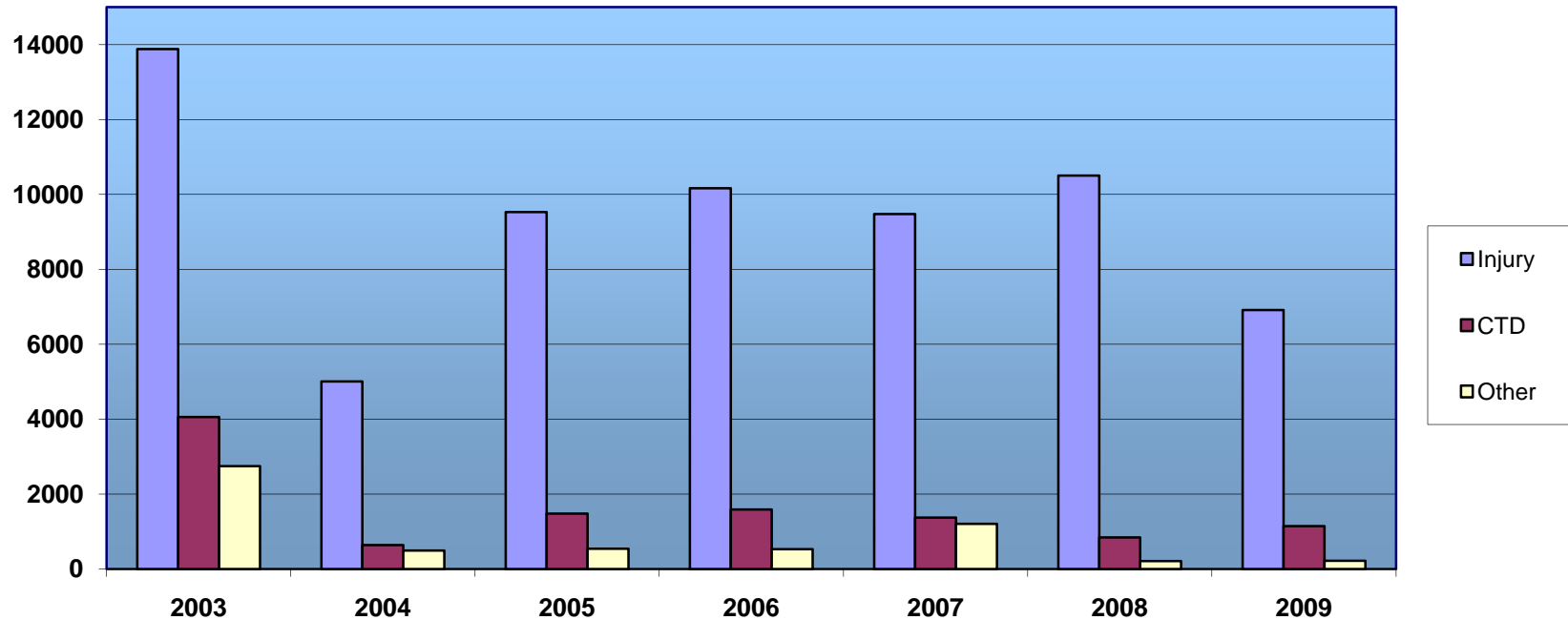


Benchmarking Survey

Summary

2010 ITSC – Denver, CO

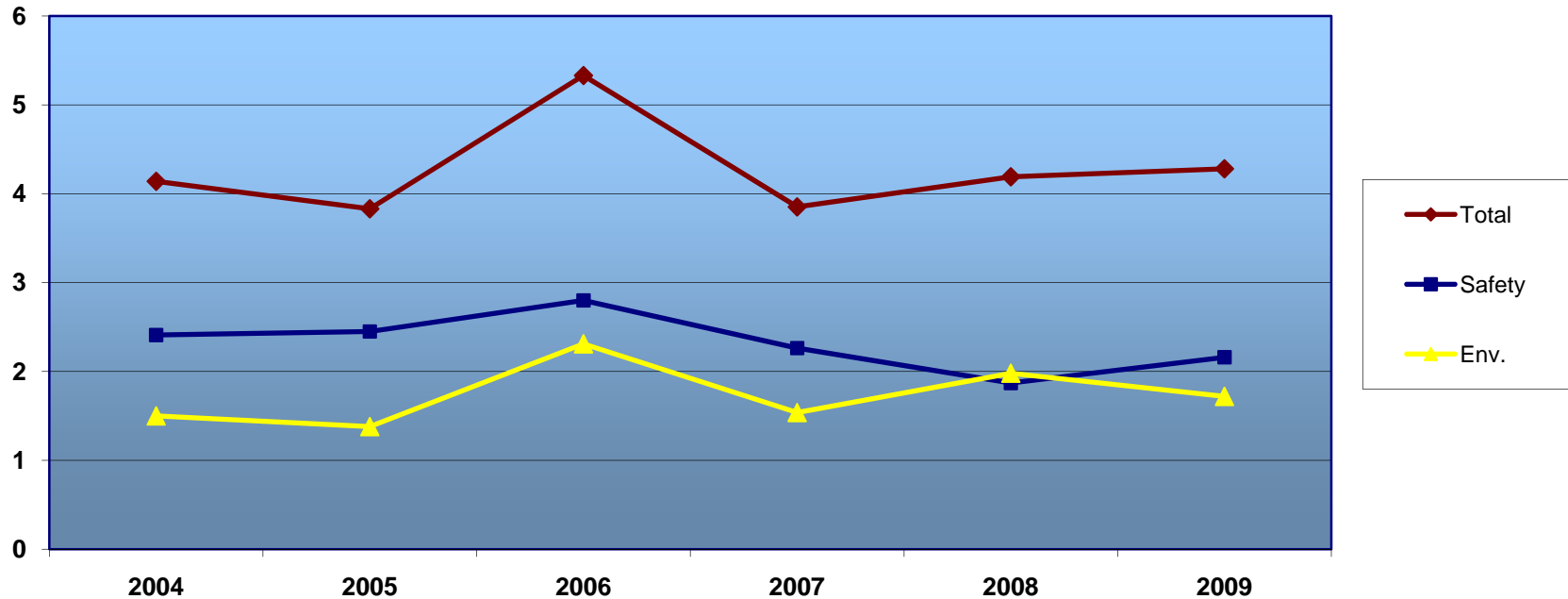
Type of Incident



Benchmarking Survey Summary

2010 ITSC – Denver, CO

EH&S Staff / 10,000 Employees





Benchmarking Survey Summary

2010 ITSC – Denver, CO

TOP CAUSES OF ACCIDENTS

Frequency

Injury

- Slip/Trip/Fall (8)

Vehicle

- Collision w/Stationary Object (3)
- Backing (2)
- Proceeding Straight Ahead (2)

Severity

Injury

- Slip/Trip/ Fall (6)
- Abnormal Bodily Reaction (1)

Vehicle

- CV Rear-Ended PV (1)
- Weather/Road Conditions (1)
- Intersection (1)
- Proceeding Straight Ahead (1)
- Turning Movements (1)



Benchmarking Survey

Summary

2010 ITSC – Denver, CO

Questions?