

2011 Environmental, Health & Safety  
International Communications  
Conference  
September 27-29

**A Beacon for EH&S**



# Benchmarking Survey Summary

- 7 Companies participating in 2010
- Occupational Injury/Illness experience
  - MSD data for Ergonomic Alliance

<u>Year</u>	<u># Employees</u>	<u># of CTDs</u>	<u>CTD Incident Rate</u>
2010	576,411	1176	0.20
2009	657,384	1144	0.17
2008	662,731	842	0.13
2007	785,388	1372	0.17
2006	605,177	1589	0.26
2005	582,923	1483	0.25
2004	544,395	2961	0.54
2003	542,717	4057	0.75
2002	578,577	4849	0.84

- Motor Vehicle Incident experience
- Professional staffing levels and organization description

# Benchmarking Survey

## Summary

2011 EHSCP – Portland, Maine

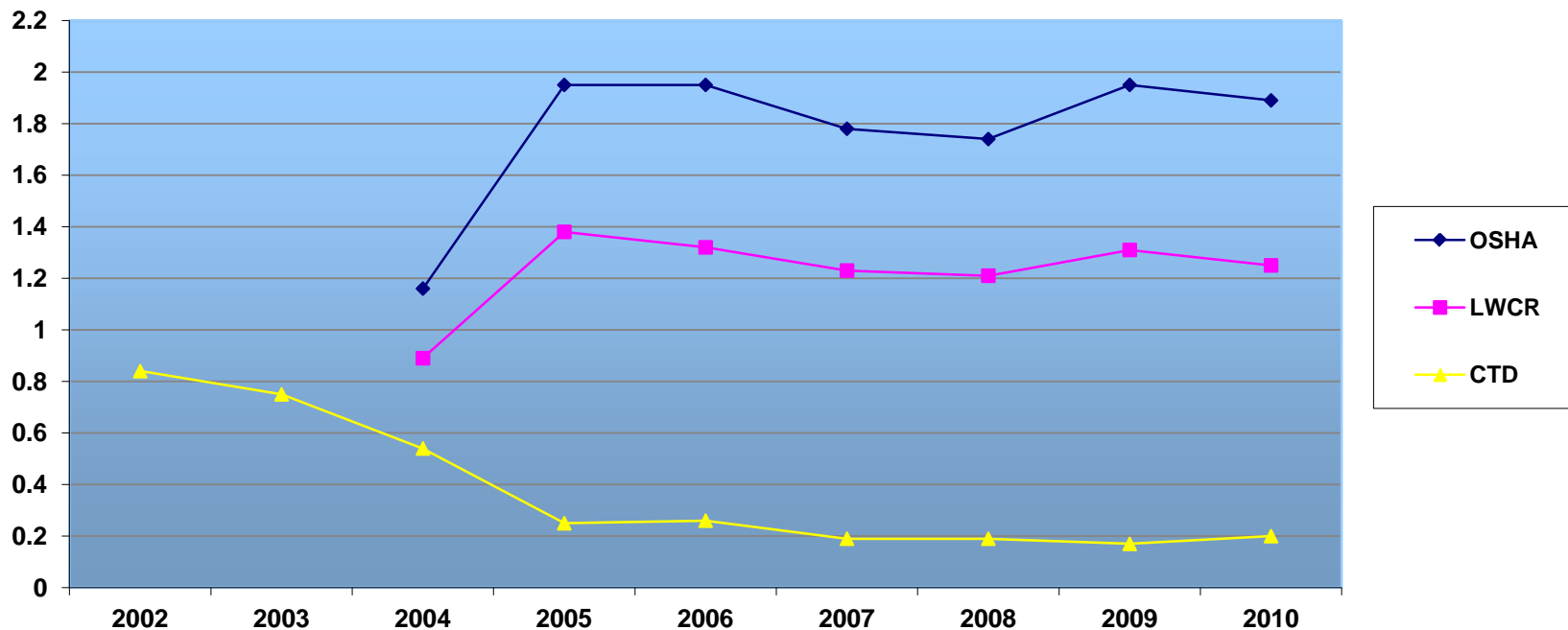
- ↓ 576,411 Total Employees
- ↑ 2.24 per 10,000 employees (Safety)
  - 129 Safety/IH/Ergo Professionals
- ↑ 2.02 per 10,000 employees (Environmental)
  - 117 Environmental Professionals
- ↓ 1 Contractor
- 9 DOT Professionals
- ↑ 4.55 Total Staff per 10,000 employees

# Benchmarking Survey

## Summary

### 2011 – Portland, Maine

Accident Frequency

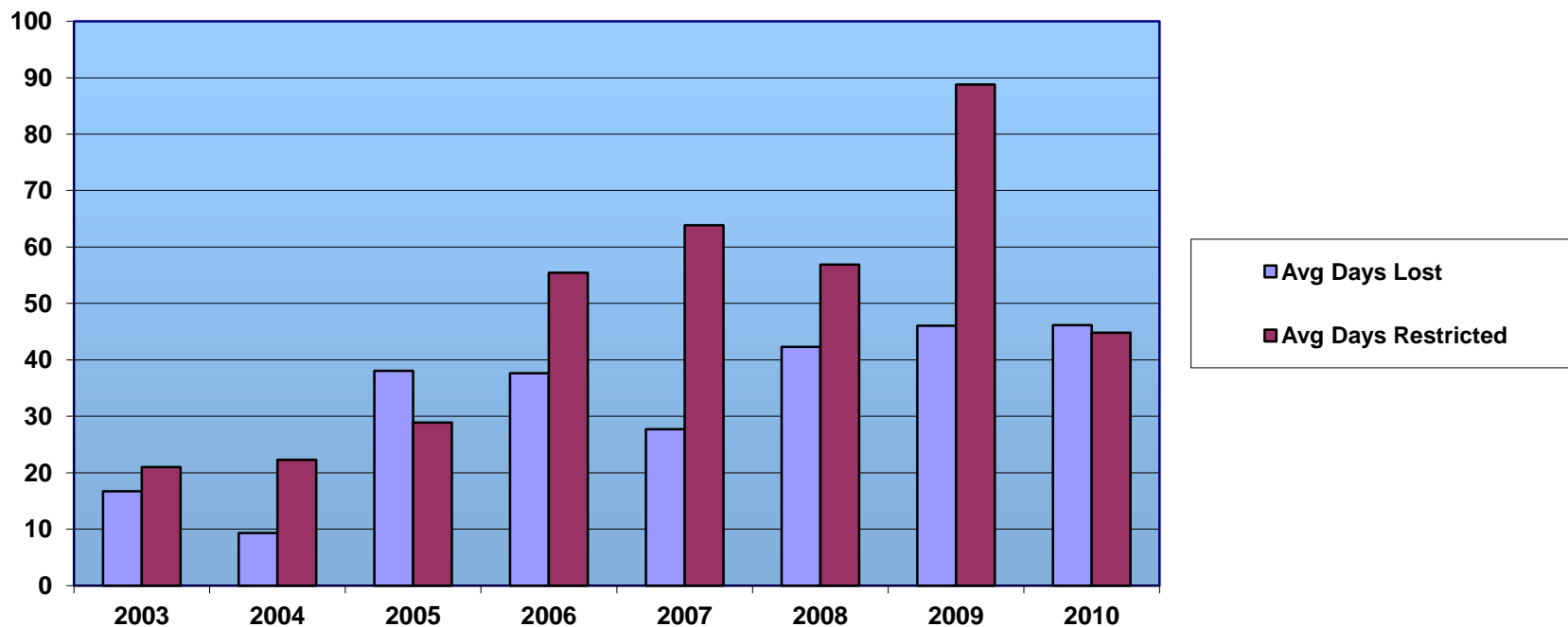


# Benchmarking Survey

## Summary

### 2011 – Portland, Maine

Accident Severity

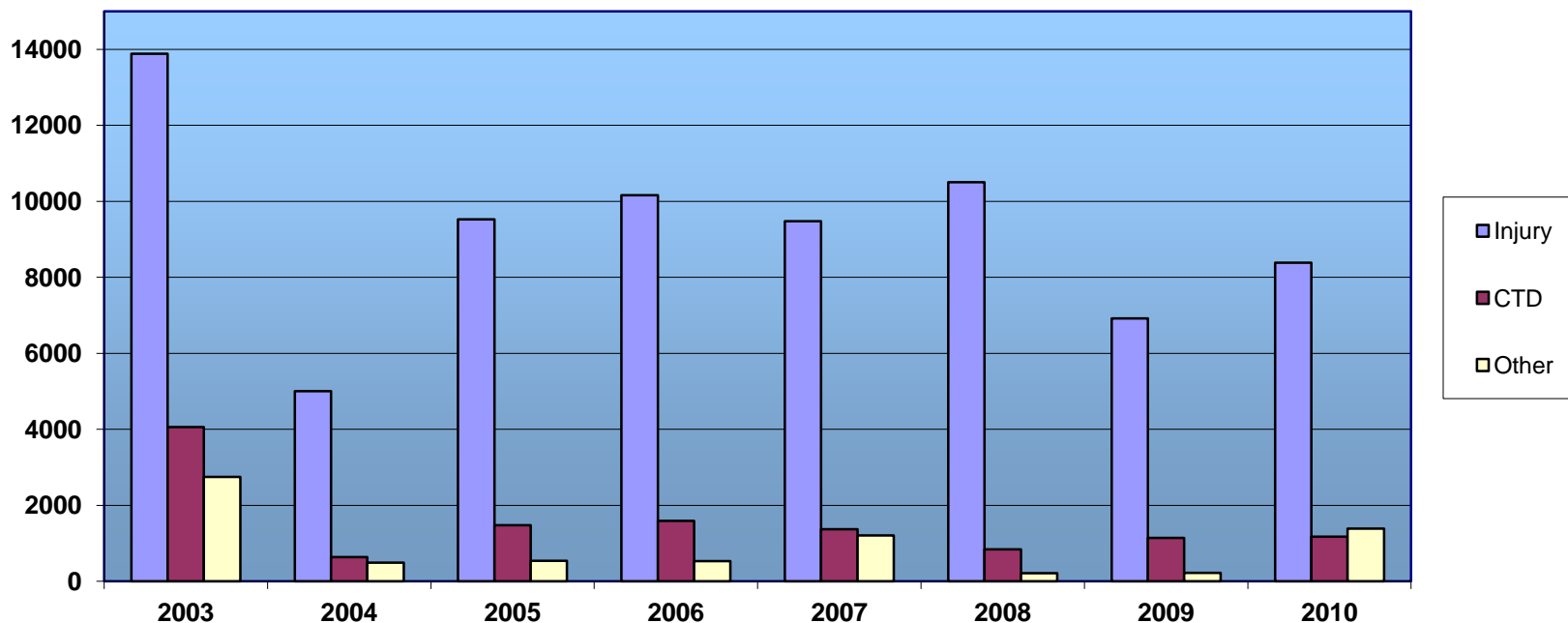


# Benchmarking Survey

## Summary

### 2011 – Portland, Maine

Type of Incident

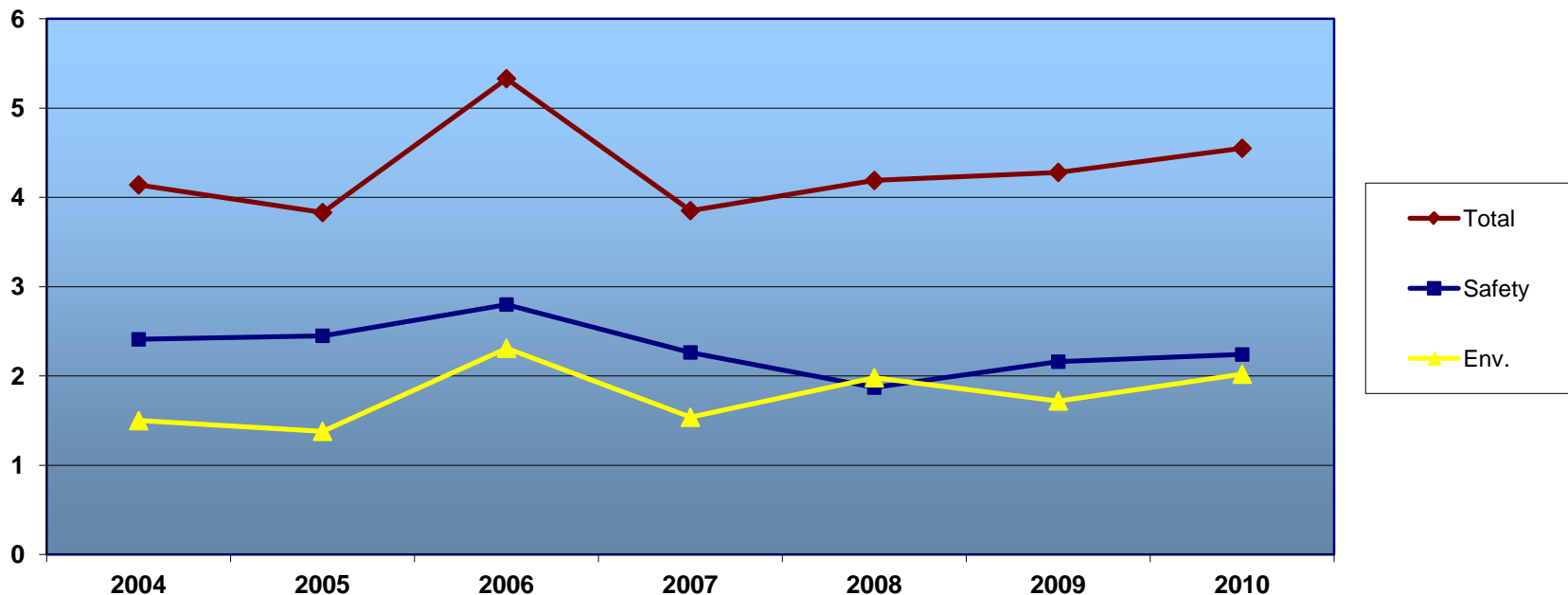


# Benchmarking Survey

## Summary

### 2011 – Portland, Maine

**EH&S Staff / 10,000 Employees**



# Benchmarking Survey Summary

2011 – Portland, Maine

## TOP CAUSES OF ACCIDENTS

### Frequency

#### Injury

- Slip/Trip/Fall (5)

#### Vehicle

- PV Rear-Ended CV (2)
- Proceeding Straight Ahead (2)

### Severity

#### Injury

- Slip/Trip/ Fall (3)
- Lifting/Exertion (3)

#### Vehicle

- PV Rear-Ended CV (1)
- CV Rear-Ended PV (1)
- Intersection (1)
- Other-Vandalism (1)





# Benchmarking Survey

## Summary

2011 EHSCP - Portland, Maine

THANK YOU

FOR

PARTICIPATING!