



EHSCP

Environmental, Health & Safety Communications Panel

2012 Environmental, Health & Safety

International Communications Conference

Santa Rosa, California
September 11 – 13

Benchmarking Survey

Summary

- 8 Companies participating in 2011
- Occupational Injury/Illness experience
 - MSD data for Ergonomic Alliance

<u>Year</u>	<u># Employees</u>	<u># of CTDs</u>	<u>CTD Incident Rate</u>
2011	548,908	805	0.15
2010	576,411	1176	0.20
2009	657,384	1144	0.17
2008	662,731	842	0.13
2007	785,388	1372	0.17
2006	605,177	1589	0.26
2005	582,923	1483	0.25
2004	544,395	2961	0.54
2003	542,717	4057	0.75
2002	578,577	4849	0.84

- Motor Vehicle Incident experience
- Professional staffing levels and organization description

Benchmarking Survey

Summary

2012 EHSCP – Santa Rosa, CA

USA EMPLOYEES

- i 548,908 Total Employees
- h 3.79 per 10,000 employees (Safety)
 - 207 Safety/IH/Ergo Professionals
- h 3.05 per 10,000 employees (Environmental)
 - 112 Environmental Professionals
- g 1 Safety Contractor
- g 56 Environmental Contractors
- h 10 DOT Professionals
- h 7.29 Total Staff per 10,000 employees

Benchmarking Survey Summary

2012 EHSCP – Santa Rosa, CA

INTERNATIONAL EMPLOYEES

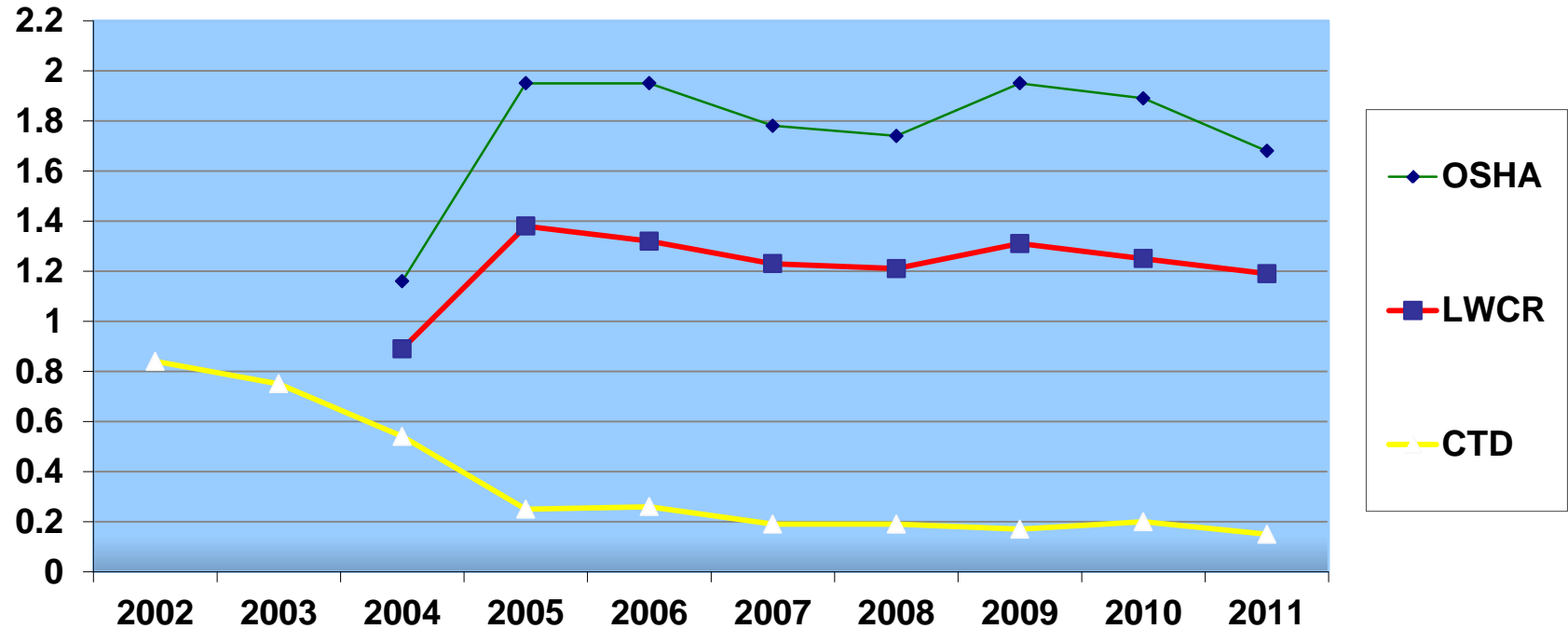
- g 66,980 Total Employees
- g 2.76 per 10,000 employees (Safety)
 - 19 Safety/IH/Ergo Professionals
- g 1.0 per 10,000 employees (Environmental)
 - 5 Environmental Professionals
- g 0 Contractors
- g 0 DOT Professionals
- g *3.43 Total Staff per 10,000 employees*

Benchmarking Survey

Summary

2012 – Santa Rosa, CA

Accident Frequency

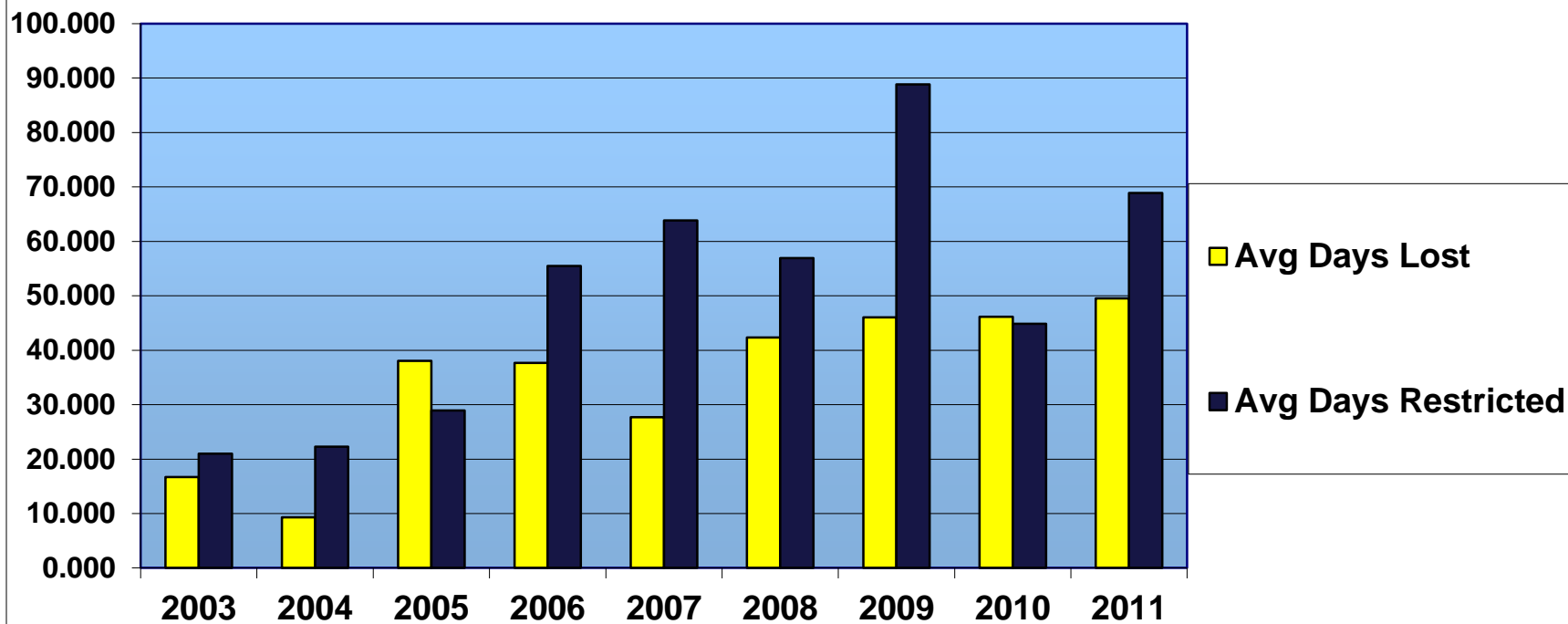


Benchmarking Survey

Summary

2012 – Santa Rosa, CA

Accident Severity

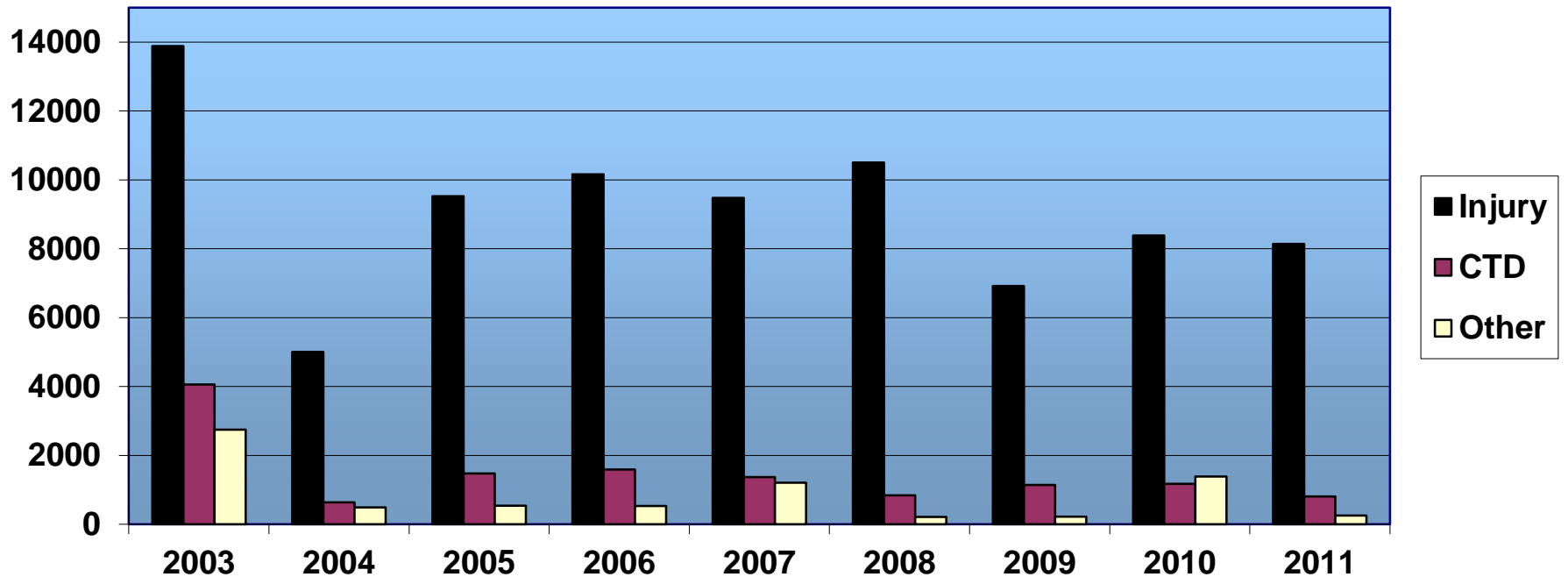


Benchmarking Survey

Summary

2012 – Santa Rosa, CA

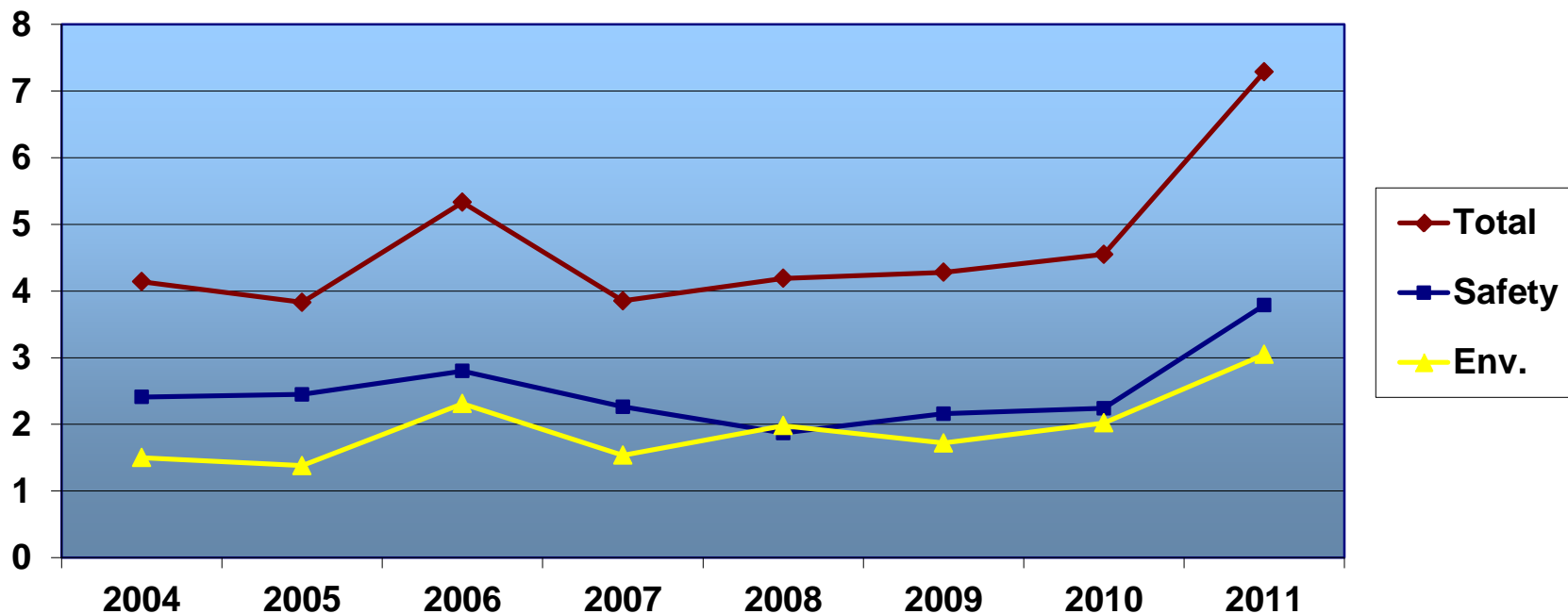
Type of Incident



Benchmarking Survey Summary

2012 – Santa Rosa, CA

EH&S Staff / 10,000 Employees



Benchmarking Survey Summary

2012 – Santa Rosa, CA

TOP CAUSES OF ACCIDENTS

Frequency

Injury

- Slip/Trip/Fall (6)

Vehicle

- CV Rear-Ended PV (3)

Severity

Injury

- Slip/Trip/ Fall (4)

Vehicle

- CV Rear-Ended PV (3)
- Intersection (2)
- Backing (1)



Benchmarking Survey

Summary

2012 EHSCP - Santa Rosa, CA

THANK YOU

FOR

PARTICIPATING!