

# **EHSOP**

**Environmental, Health & Safety Communications Panel**

**Environmental, Health and  
Safety  
International Communications  
Conference  
Kansas City, Missouri**

**September 10-12, 2013**



# Benchmarking Survey

## 2012 Summary

- 7 Companies participating in 2012
- Occupational Injury/Illness experience
  - MSD data for Ergonomic Alliance

<u>Year</u>	<u># Employees</u>	<u># of CTDs</u>	<u>CTD Incident Rate</u>
2012	506,070	831	0.16
2011	548,908	805	0.15
2010	576,411	1176	0.20
2009	657,384	1144	0.17
2008	662,731	842	0.13
2007	785,388	1372	0.17
2006	605,177	1589	0.26
2005	582,923	1483	0.25
2004	544,395	2961	0.54
2003	542,717	4057	0.75
2002	578,577	4849	0.84

- Motor Vehicle Incident experience
- Professional staffing levels and organization description

# Benchmarking Survey

## Summary

2013 EHSCP – Kansas City, Missouri

### *USA EMPLOYEES*

- ↓ **506,070 Total Employees**
- ↑ **4.85 per 10,000 Employees (Safety)**
  - 246 Safety/IH/Ergo Professionals
- ↓ **3.04 per 10,000 Employees (Environmental)**
  - 113 Environmental Professionals
- ↓ **0 Safety Contractor**
- ↓ **41 Environmental Contractors**
- ↓ **4 DOT Professionals**
- ↑ **8.06 Total Staff per 10,000 Employees**

# Benchmarking Survey Summary

## 2013 EHSCP – Kansas City, Missouri

### *INTERNATIONAL EMPLOYEES*

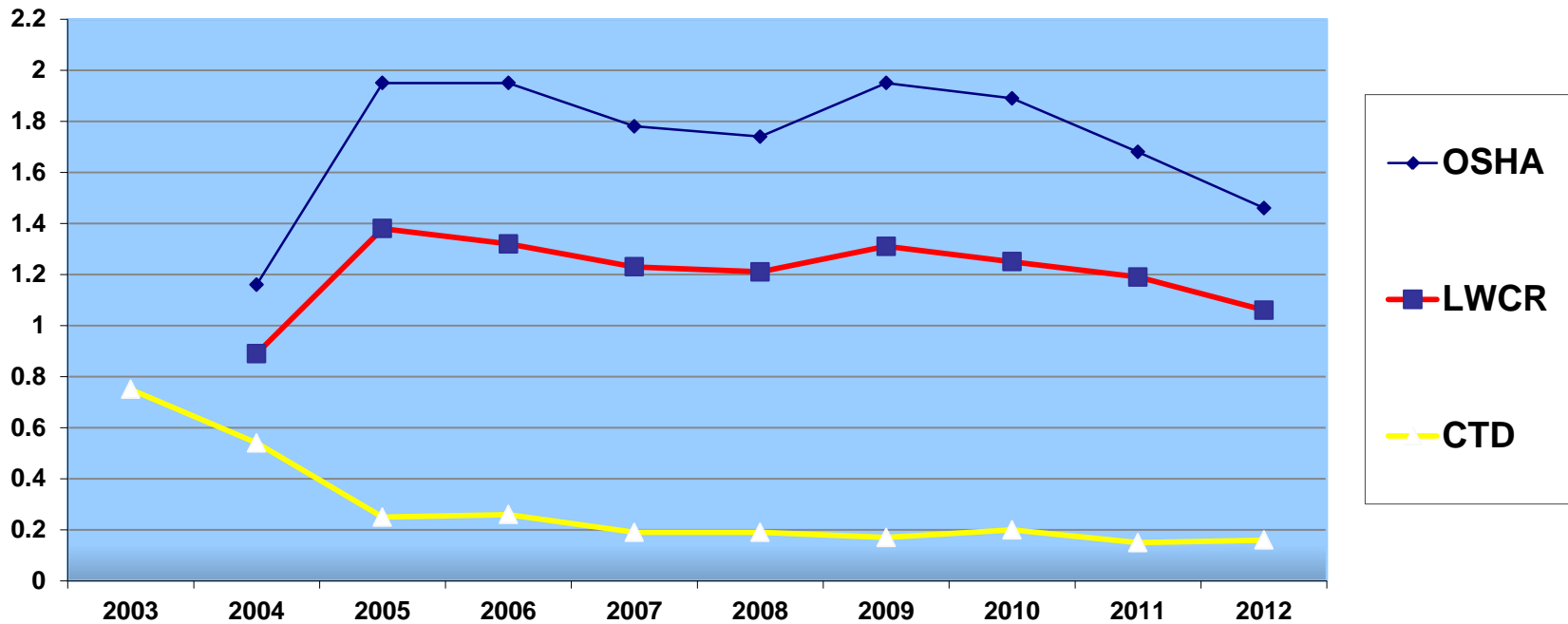
- ↓ **28,486 Total Employees**
- ↑ **10.09 per 10,000 Employees (Safety)**
  - 28 Safety/IH/Ergo Professionals
- ↑ **2.0 per 10,000 Employees (Environmental)**
  - 5 Environmental Professionals
- ↑ **1 Safety Contractors**
- ↑ **1 DOT Professionals**
- ↑ ***12.02 Total Staff per 10,000 Employees***

# Benchmarking Survey

## Summary

### 2013 EHSCP – Kansas City, Missouri

#### Accident Frequency

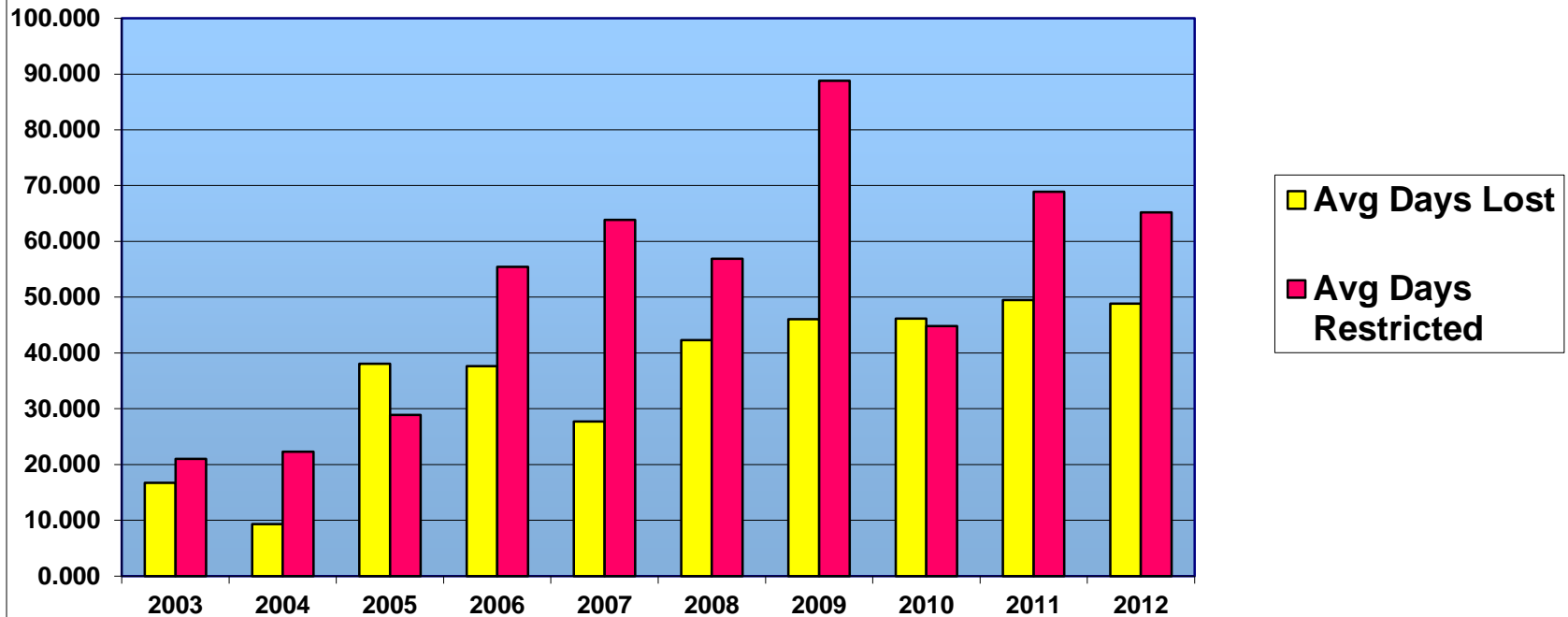


# Benchmarking Survey

## Summary

### 2013 EHSCP – Kansas City, Missouri

#### Accident Severity

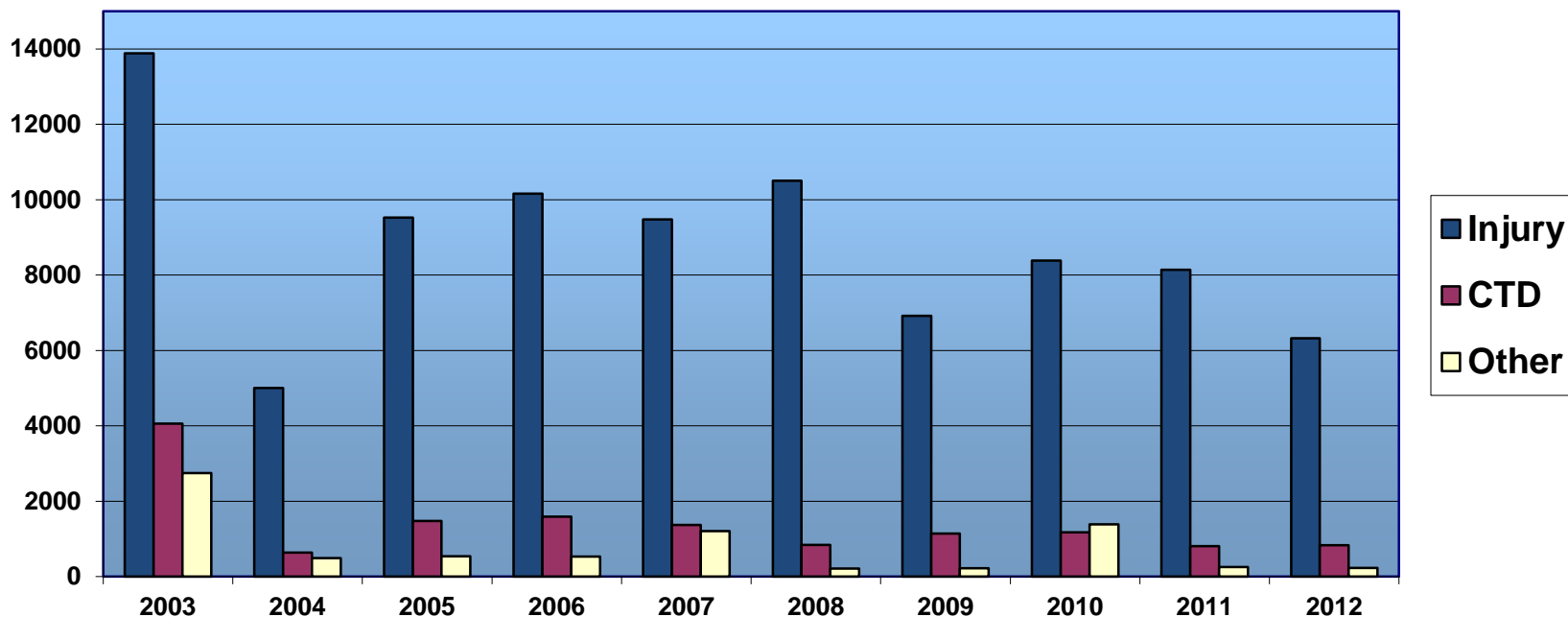


# Benchmarking Survey

## Summary

### 2013 EHSCP – Kansas City, Missouri

#### Type of Incident

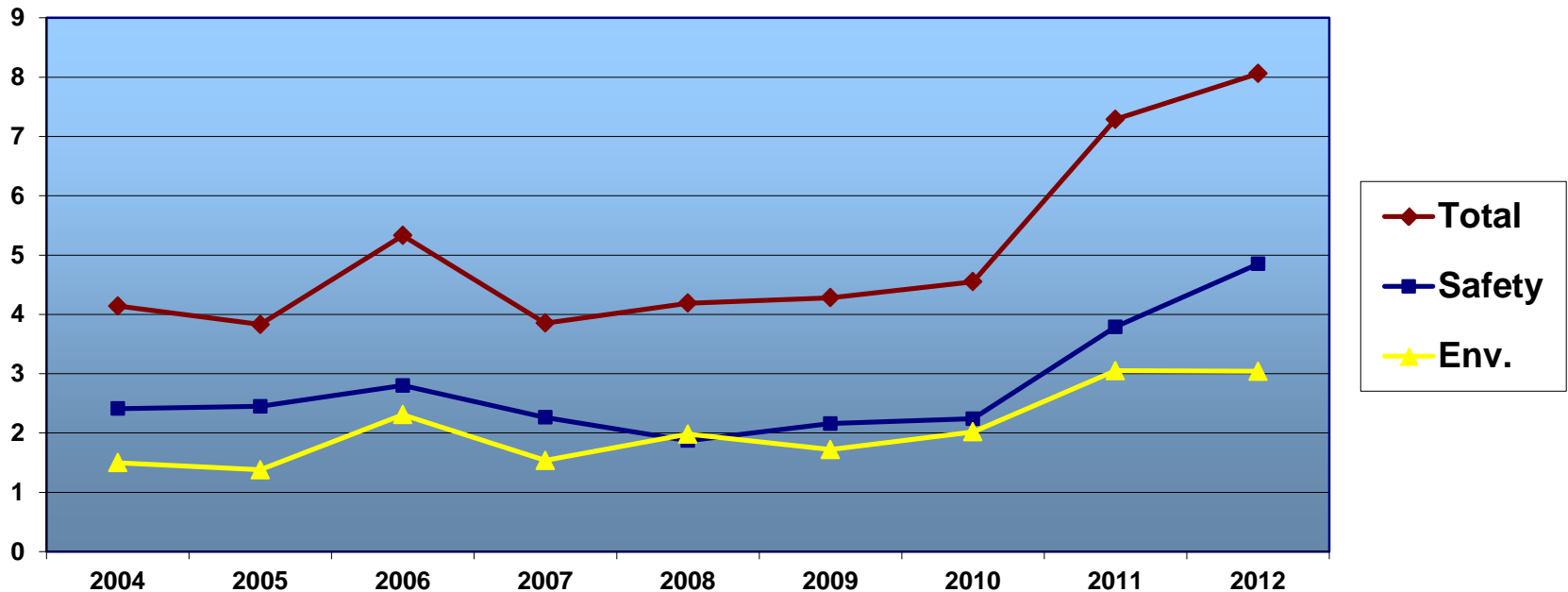


# Benchmarking Survey

## Summary

### 2013 EHSCP – Kansas City, Missouri

**EH&S Staff / 10,000 Employees**  
**USA**



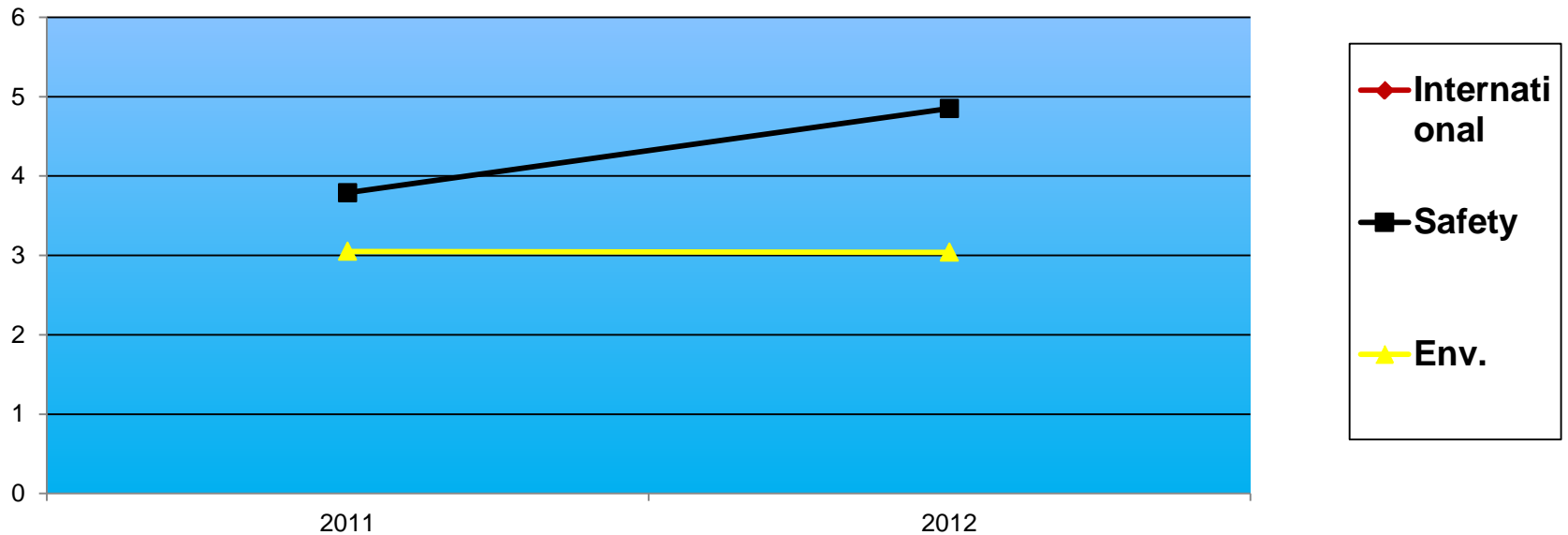


# Benchmarking Survey

## Summary

### 2013 EHSCP – Kansas City, Missouri

#### EH&S Staff/10,000 Employees International



# Benchmarking Survey

## Summary

### 2013 EHSCP – Kansas City, Missouri

## TOP CAUSES OF ACCIDENTS

### Frequency

#### Injury

- Slip/Trip/Fall (4)
- Lifting (2)
- Abnormal Bodily Reaction (1)

#### Vehicle

- CV Rear-Ended PV (3)
- PV Rear-Ended CV (3)
- Proceeding Straight Ahead (1)

### Severity

#### Injury

- Slip/Trip/ Fall (3)
- Lifting & Exertion (2)
- Vehicular Accident (1)
- Abnormal Bodily Reaction (1)

#### Vehicle

- PV Rear-Ended CV (3)
- CV Rear-Ended PV (2)
- Collision with Stationary Object (1)

# Benchmarking Survey Summary

THANK YOU  
FOR  
PARTICIPATING!