



EHS&C
Environmental, Health & Safety Communications Panel

BENCHMARKING SURVEY SUMMARY

2015 EHSCP

- Occupational injury/illness experience
- MSD data
- Motor vehicle incident experience
- EH&S staffing

YEAR	# EMPLOYEES	# CTD's	CTD INCIDENT RATE
2014	547,227	580	0.11
2013	562,674	1050	0.19
2012	506,070	831	0.16
2011	548908	805	0.15
2010	576411	1176	0.2
2009	657384	1144	0.17
2008	662731	842	0.13
2008	785388	1372	0.17
2007	605177	1589	0.26
2006	582923	1483	0.25
2005	544395	2961	0.54
2004	542717	4057	0.75
2003	578577	4849	0.84

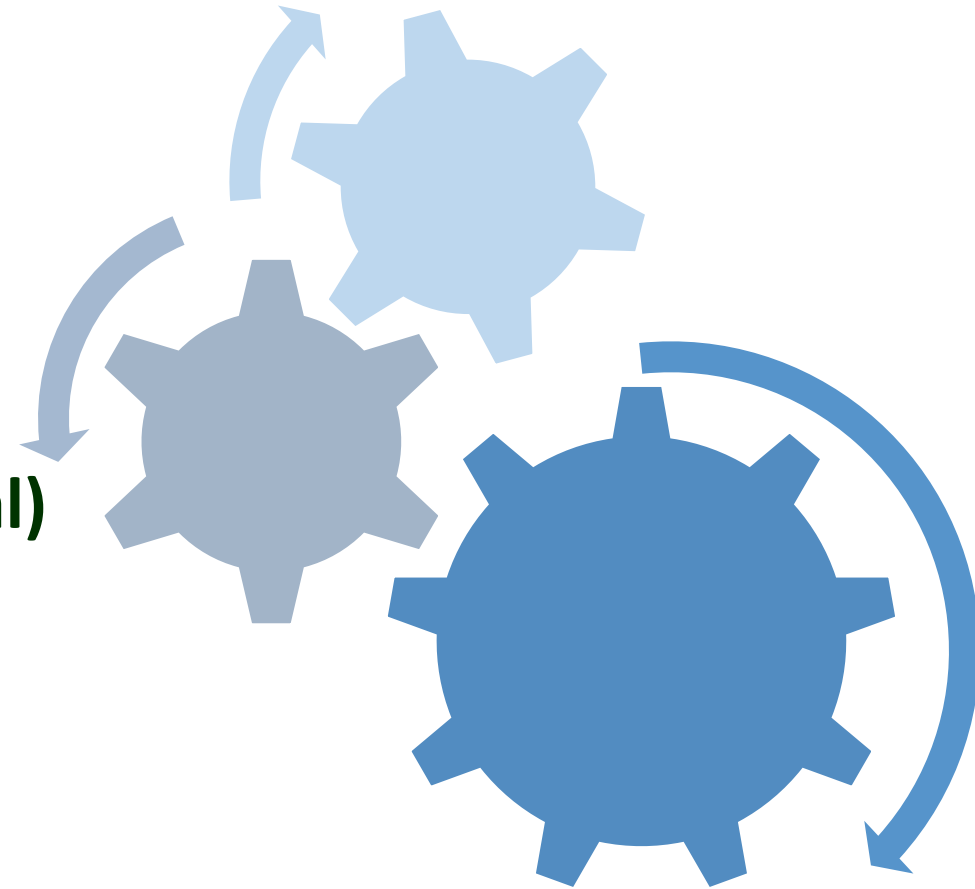
USA EMPLOYEES



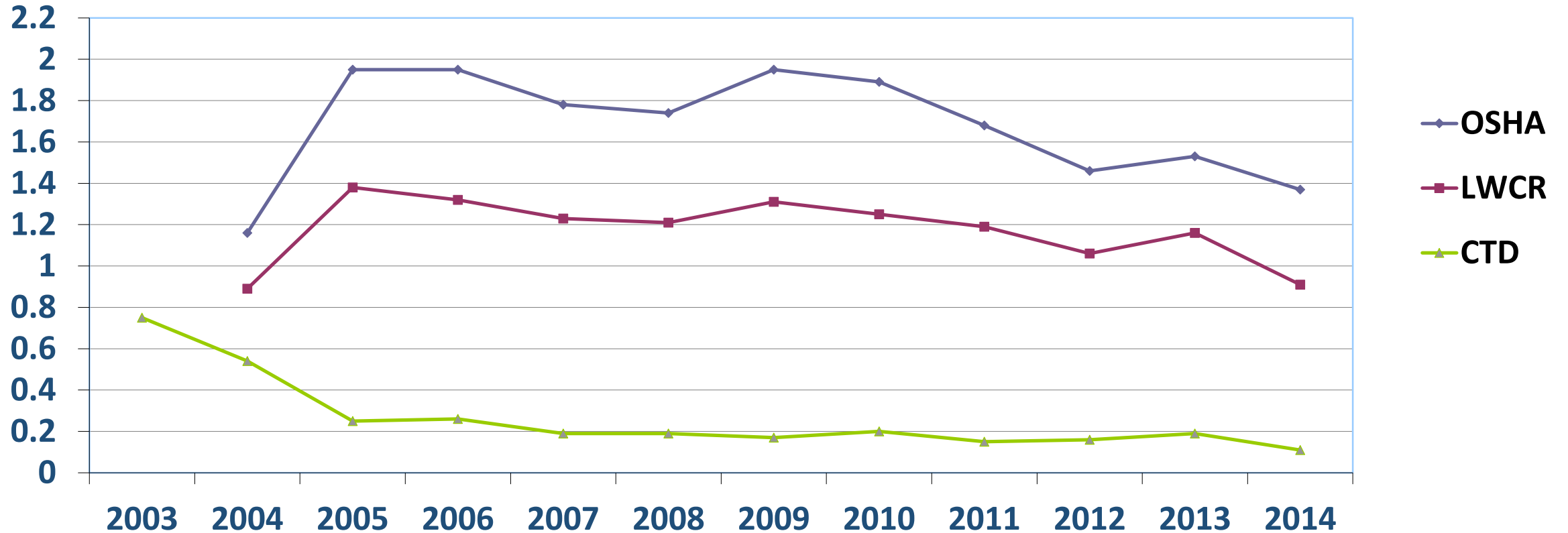
- ↓ **501,546 Total Employees**
- ↓ **2.71 per 10,000 Employees (Safety)**
- ↓ **135 Safety/IH/Ergo Professionals**
- ↑ **3.5 per 10,000 Employees (Environmental)**
- ↑ **144 Environmental Professionals**
- ↔ **1 Safety Contractor**
- ↑ **32 Environmental Contractors**
- ↑ **9 DOT Professionals**
- ↓ ***6.7 Total Staff per 10,000 Employees***

INTERNATIONAL EMPLOYEES

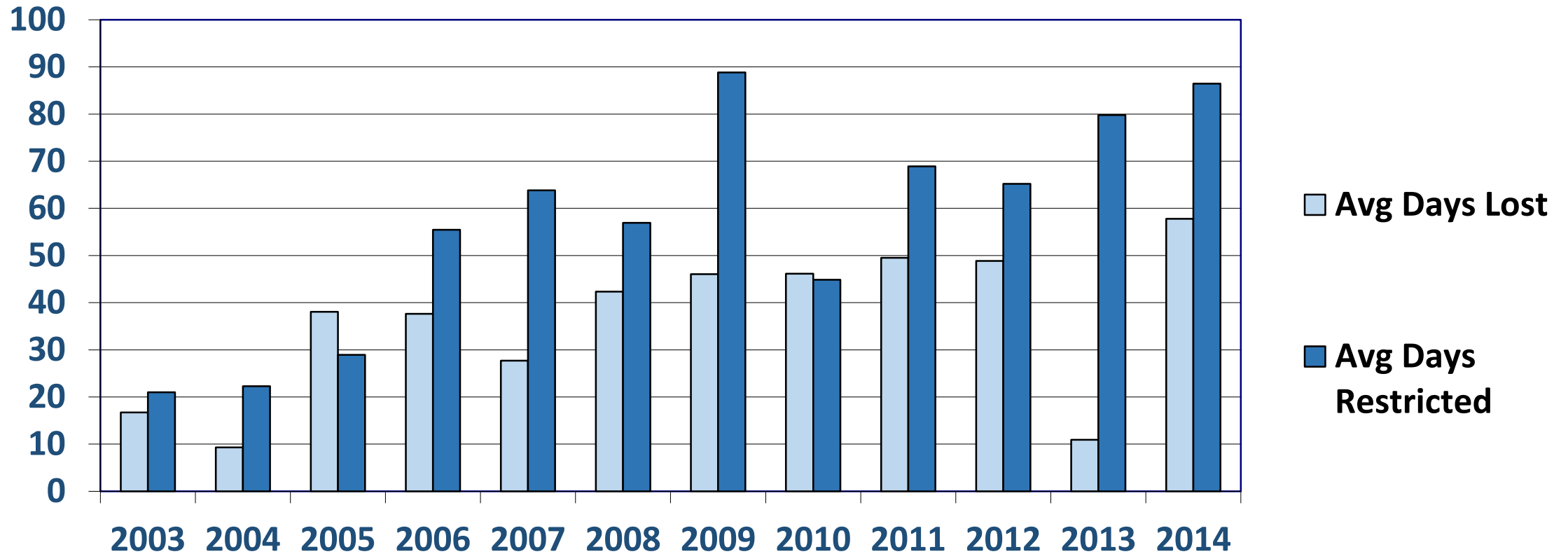
- ↑ **45,681 Total Employees**
- ↑ **17.9 per 10,000 Employees (Safety)**
- ↑ **72 Safety/IH/Ergo Professionals**
- ↓ **1.5 per 10,000 Employees (Environmental)**
- ↓ **7 Environmental Professionals**
- ↑ **10 Safety Contractors**
- ↔ **0 Environmental Contractors**
- ↓ **1 DOT Professionals**
- ↑ ***17.5 Total Staff per 10,000 Employees***



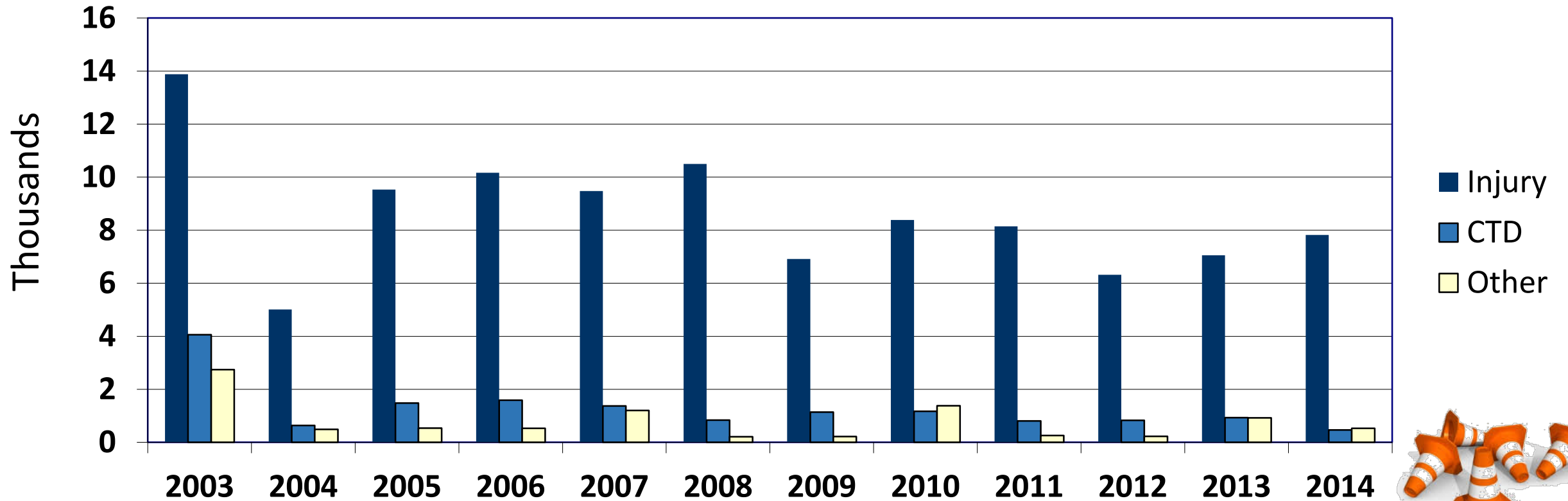
Accident Frequency



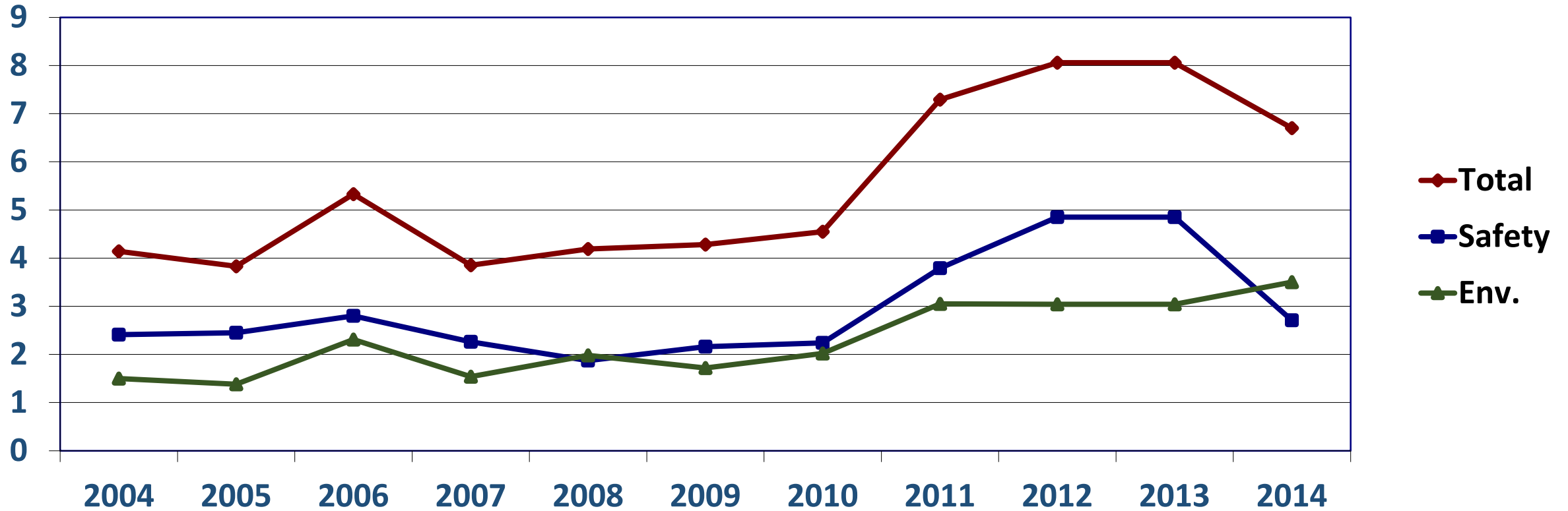
Accident Severity



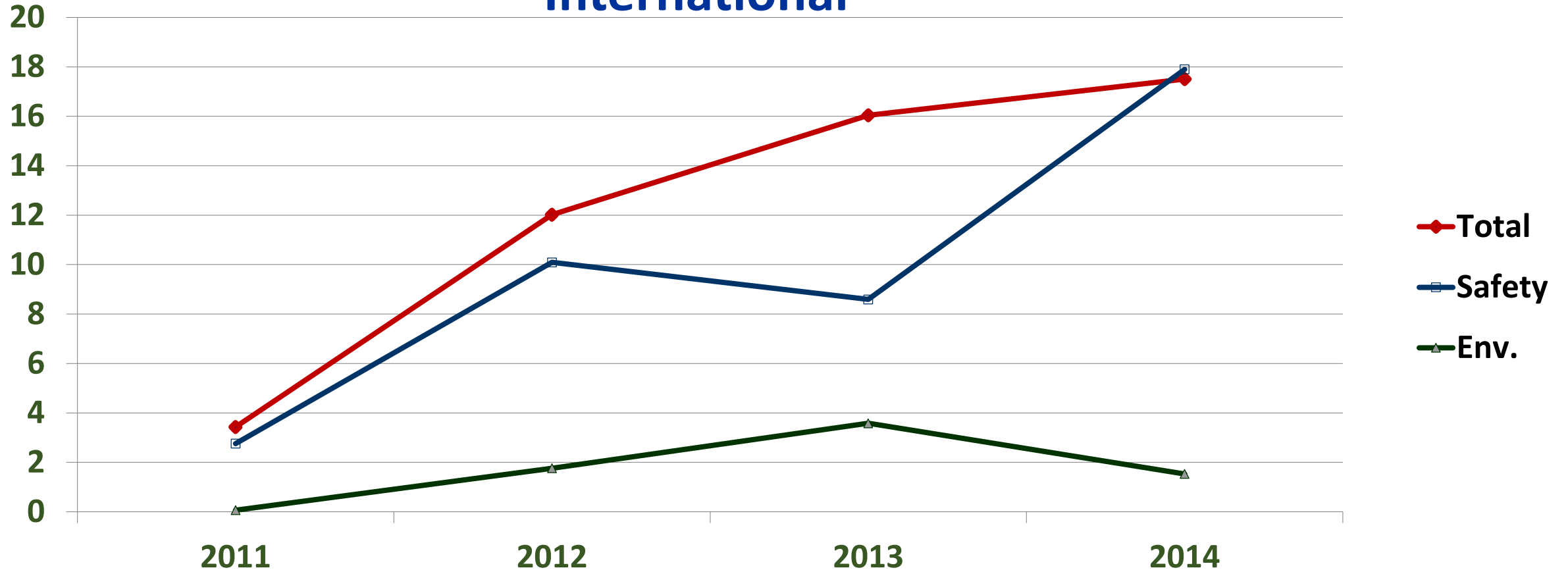
Type of Incident



EH&S Staff / 10,000 Employees
USA



EH&S Staff / 10,000 Employees
International



TOP CAUSES OF ACCIDENTS

Frequency

INJURY

- Lifting/Exertion (4)
- Slip/Fall (2)
- Struck By/Against
- CTD

Vehicle

- PV Rear-End CV (1)
- Backing (1)
- Proceeding Straight (1)
- CV Rear-End PV
- Stationary Object

Severity

INJURY

- Lifting Exertion (3)
- Slip/Trip/Fall (2)
- Struck By/Against

Vehicle

- CV Rear-End PV (1)
- PV Rear-End CV (1)
- Stationary Object



THANKS TO ALL WHO PARTICIPATED!

QUESTIONS?